



Rock 'N Dumper

Self Dumping Hopper



- Replace drums and barrels with easy unloading hoppers
- Great for storing materials
- Stackable thru 2 1/2 Cu.Yds.
- Excellent for in-plant housekeeping
- Rights itself and locks into loading position after dumping
- Improves employee material handling efficiency
- Reduces employee insurance claims and down time injuries
- End individual handling of sharp or heavy pieces
- Add a simple remote latch pull and fork truck drivers stay on the truck



The Galfab Advantage



Easy Dump

Make your fork truck into a dump truck. Dumps with a simple lift of the handle.



Solid Rocker Support

Provides uniform support for the rockers.



Release Handle

Reversible latch handle with latch lock.



V-Groove Rocker Control

Provides smooth controlled motion. No pins to jump holes. Body and base stay aligned and together.

Standard Features

- Prime Paint
- One-way Fork Pockets
- Chain for Retaining Hopper to Forklift

Options

- Available in Heavy Gauge (7 Ga.) or Light Gauge (12 Ga.)
- Casters- 4", 6", 8" in Steel or Rubber Locks
- Crane Pick-up Hooks
- 3-way Entry
- Steel Lids, 3 Types
- Remote Latch Pull
- Choice of Standard GalFab Colors
- Platform Legs

Special Features

- Dumper Body Stays Aligned on Base, Will Not Jump Pin Holes
- Forks are Totally Enclosed on All Dumpers
- Body & Base Will Not Separate
- Dumpers Stackable Through 2 1/2 Cubic Yards
- Double Lock Latch on Tripping Handle

DISTRIBUTED BY:

Rock 'N Dumper

Self Dumping Hopper



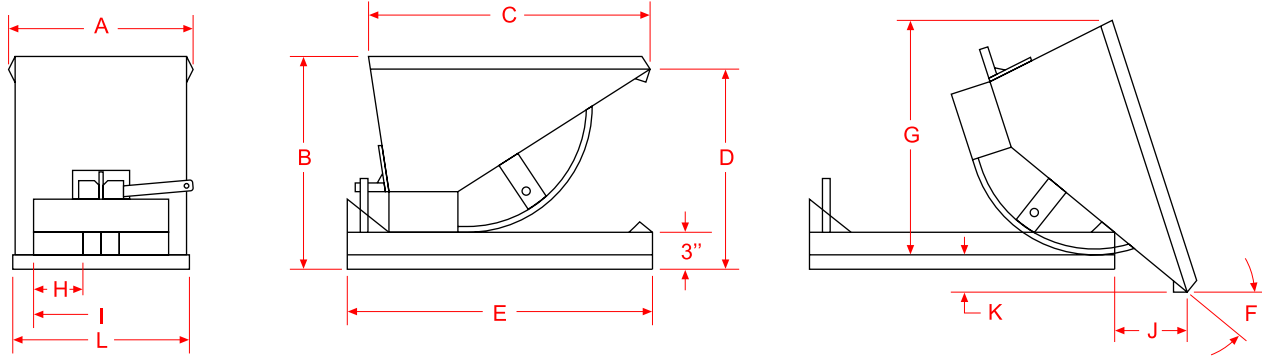
LOAD

ENGAGE

CARRY

UNLOAD

RETURN



Model	A	B	C	D	E	F	G	H	I	J	K	L	Ship Wt	Cu Yd*	Rated Cap**
HD0.18	19	23	38	23	34	38°	30	14	14	14-1/2	6	20	235#	3/16	3000#
HD0.25	30-1/4	25	41	25	41	45°	40	9-7/8	22-3/4	10	3	30-1/4	400#	1/4	3000#
HD0.5	39-1/2	30-1/4	46	27	41	45°	45	9-7/8	31-1/2	16-3/4	9-3/4	39	460#	1/2	4000#
HD0.75	39-1/2	36-1/4	54	32	48	40°	45	9-7/8	31-1/2	18-1/2	8	39-1/2	510#	3/4	4000#
HD1.0	39-1/2	41-1/4	62	36-1/2	50-1/2	36°	51	9-7/8	31-1/2	27-1/2	6-1/2	39	570#	1	6000#
HD1.5	44-1/2	46-1/2	67	37-1/2	56	43°	67	9-7/8	36	24	10	43-3/4	740#	1-1/2	6000#
HD2.0	57-1/2	46-1/2	67	37-1/2	56	44°	57-1/2	12	49-1/4	24	10	57-1/2	830#	2	6000#
HD2.5	58	53-1/2	68	36-1/2	56	33°	65	12	49-1/4	24	3	57-1/2	920#	2-1/2	6000#
HD3.0	67	53-1/2	68	36-1/2	56	33°	65	12	49-1/4	24	3	57-1/2	980#	3	5000#
HD2.5LP	71-1/4	46-1/2	67	36-1/2	56	45°	57	12	49-1/4	22-1/2	10-3/4	57-1/2	1010#	2-1/2	6000#
HD3.0LP	84-3/4	46-1/2	67	36-1/2	56	45°	57	12	49-1/4	22-1/2	10-3/4	57-1/2	1100#	3	5000#
HD4.0	88	53-1/2	68	36-1/2	56	33°	65	12	49-1/4	24	3	57-1/2	1250#	4	4000#
HD5.0	100	58-1/2	69	36-1/2	56	33°	69-1/2	12	49-1/4	24	3	57-1/2	1445#	5	4000#
Model	A	B	C	D	E	F	G	H	I	J	K	L	Ship Wt	Cu Yd*	Rated Cap**
LD0.5	39-1/2	30-1/2	46	28	41	45°	45	9-7/8	31-1/2	27-5/8	7-1/8	39-1/2	340#	1/2	1500#
LD0.75	39-1/2	36-1/4	54	32	48	40°	45	9-7/8	31-1/2	18-1/2	8	39-1/2	375#	3/4	2000#
LD1.0	39-1/2	41-1/4	62	36-1/2	50-1/2	36°	61	9-7/8	31-1/2	27-5/8	7-1/8	39-1/2	470#	1	2000#
LD1.5	44-1/2	46-1/2	67	37-1/2	56	43°	67	9-7/8	36	23	10	44-1/2	560#	1-1/2	2000#
LD2.0	57-1/2	46-1/2	67	37-1/2	56	44°	67	12	49-1/4	23	10	57-1/2	620#	2	2000#
LD2.5	57-1/2	53-1/2	68	36-1/2	56	33°	69	12	49-1/4	24	11	57-1/2	700#	2-1/2	2000#
LD3.0	66-1/2	53-1/2	68	36-1/2	56	33°	69	12	49-1/4	24	11	57-1/2	710#	3	2000#

* APPROXIMATE WATER LEVEL VOLUME

** ESTABLISHED BY FACTORY TESTING UP TO CAPACITY SHOWN

CAUTION: This Equipment Should be Operated by Properly Trained Personnel. Improper Use, Misuse or Lack of Maintenance Could Cause Injury to Persons or Property. Photos used in this brochure are illustrative only. We reserve the right to make changes at any time without notice. Information contained within this literature is believed to be the most accurate available at the time of printing.